

Chart 2: Is the Human Subjects Research Eligible for Exemption? [View text version of Chart 2](#)

February 16, 2016

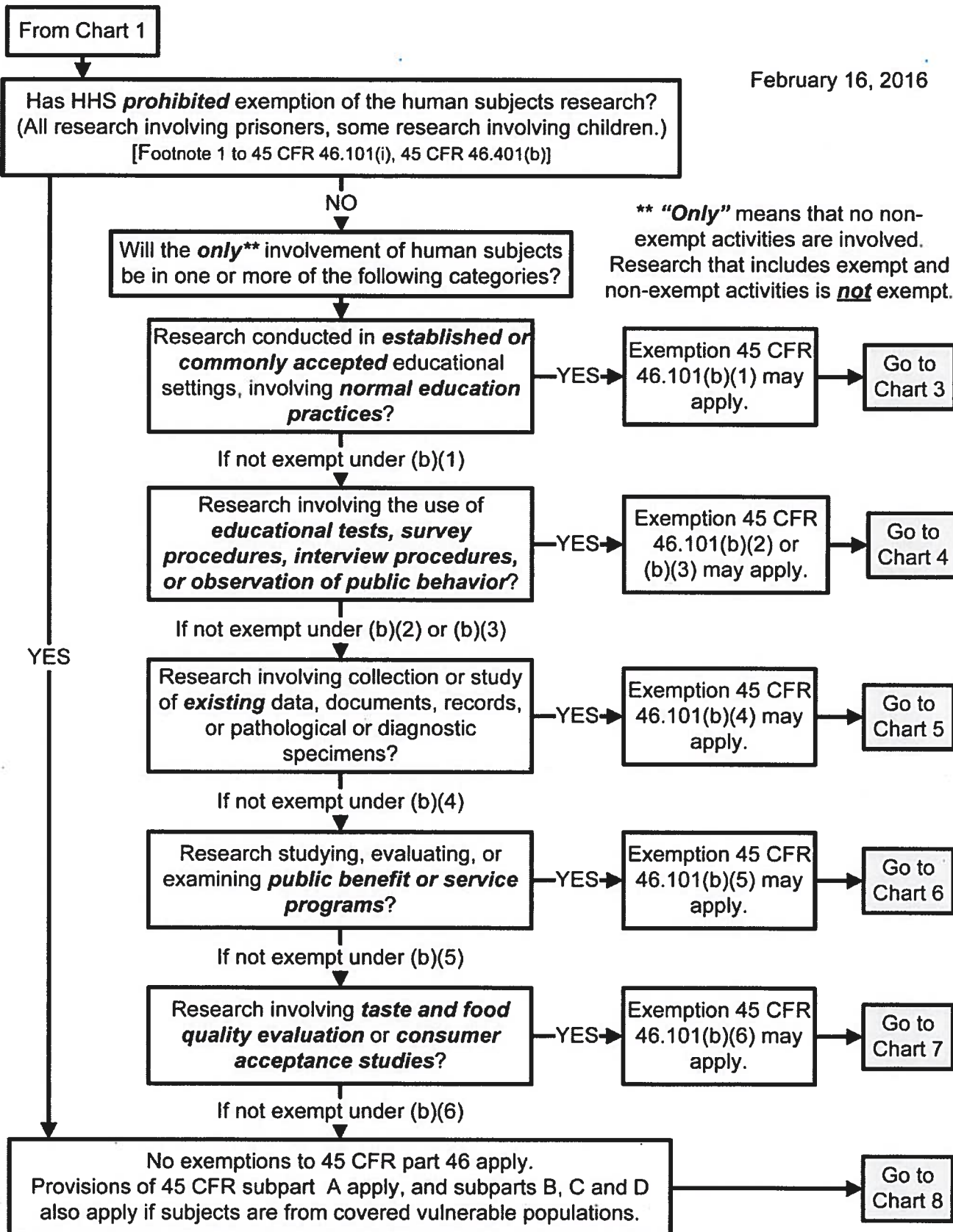


Chart 3: Does Exemption 45 CFR 46.101(b)(1) (for Educational Settings) Apply?
[View text version of Chart 3](#)

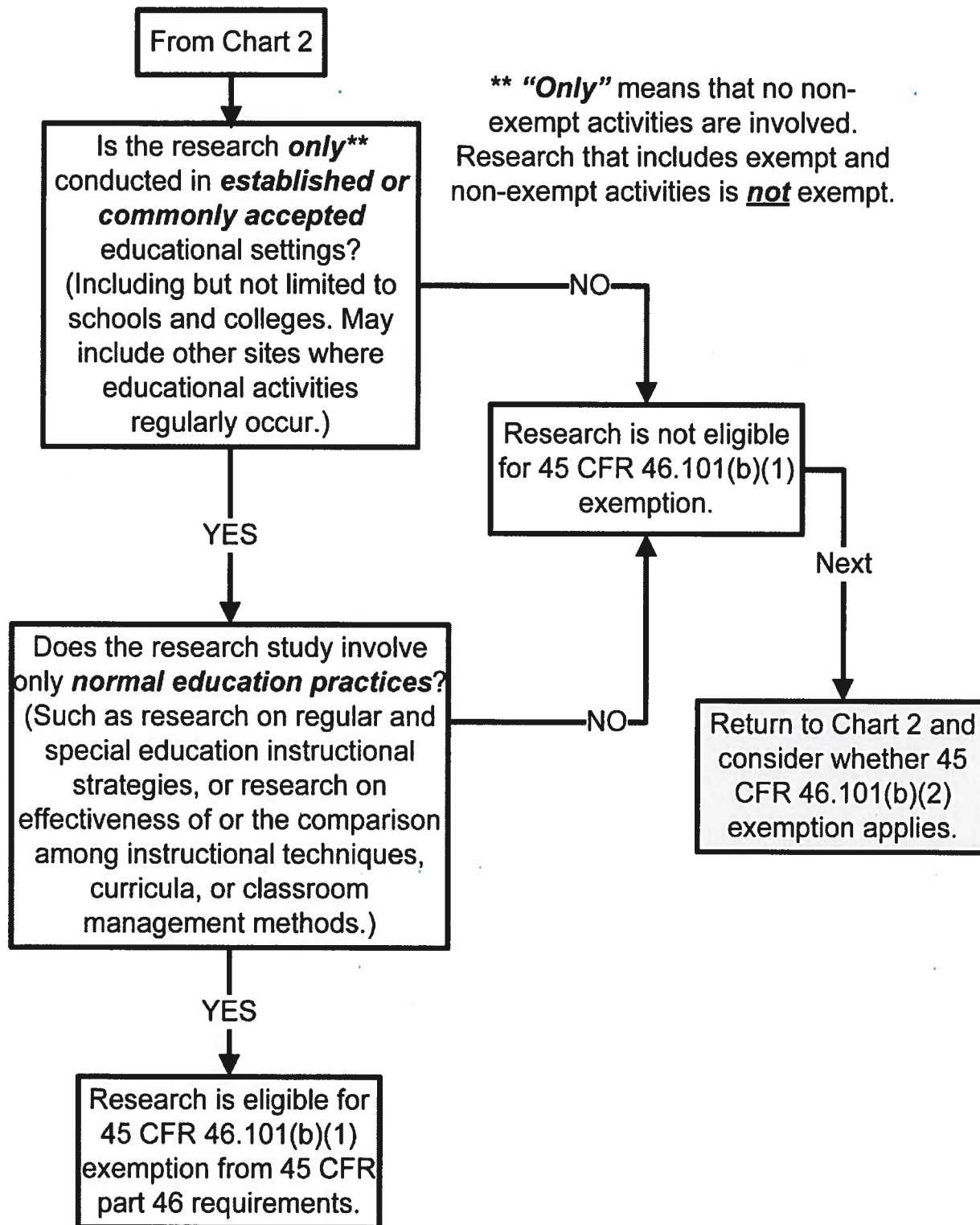


Chart 4: Does exemption 45 CFR 46.101(b)(2) or (b)(3) (for Tests, Surveys, Interviews, Public Behavior Observation) Apply? [View text version of Chart 4](#)

February 16, 2016

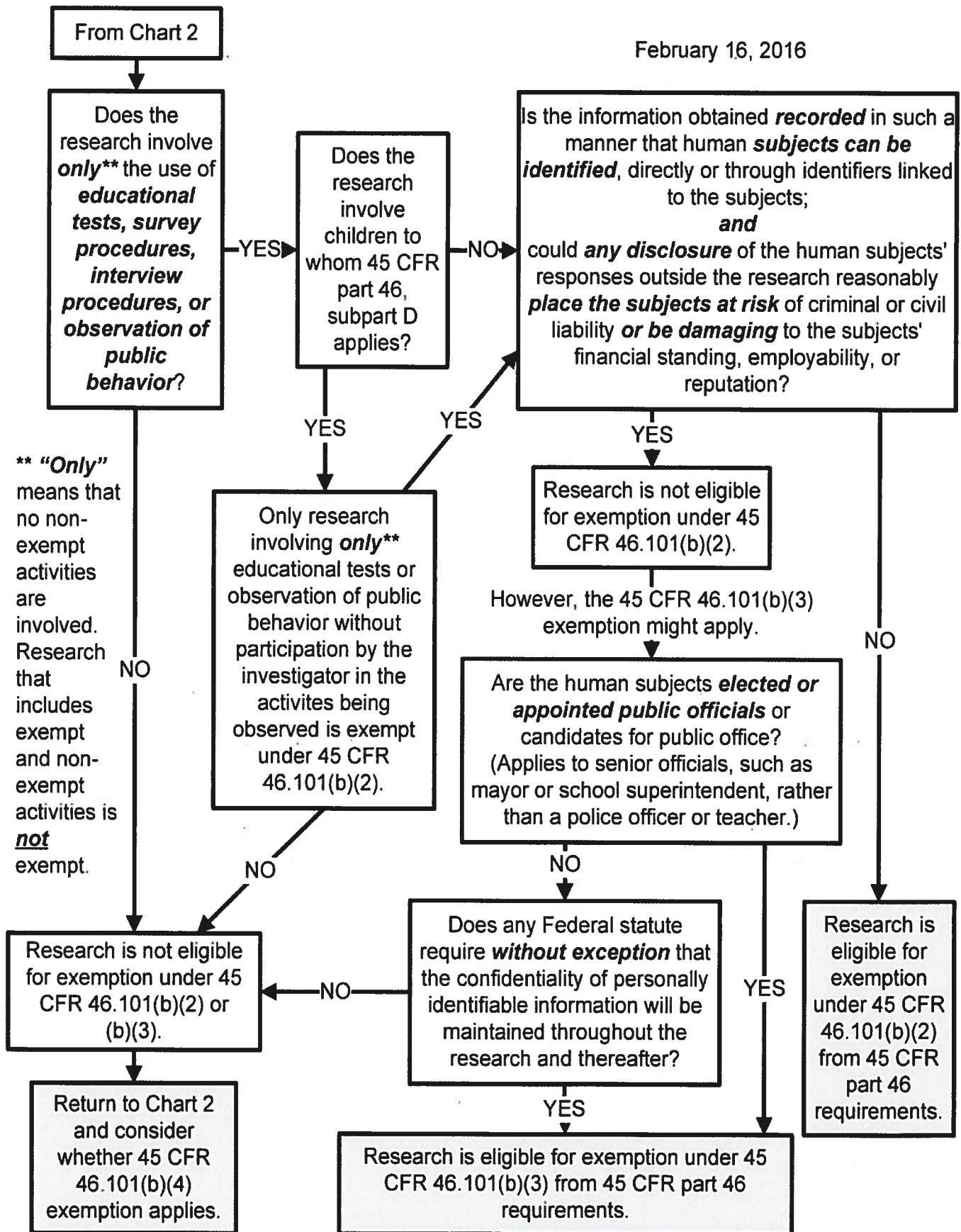
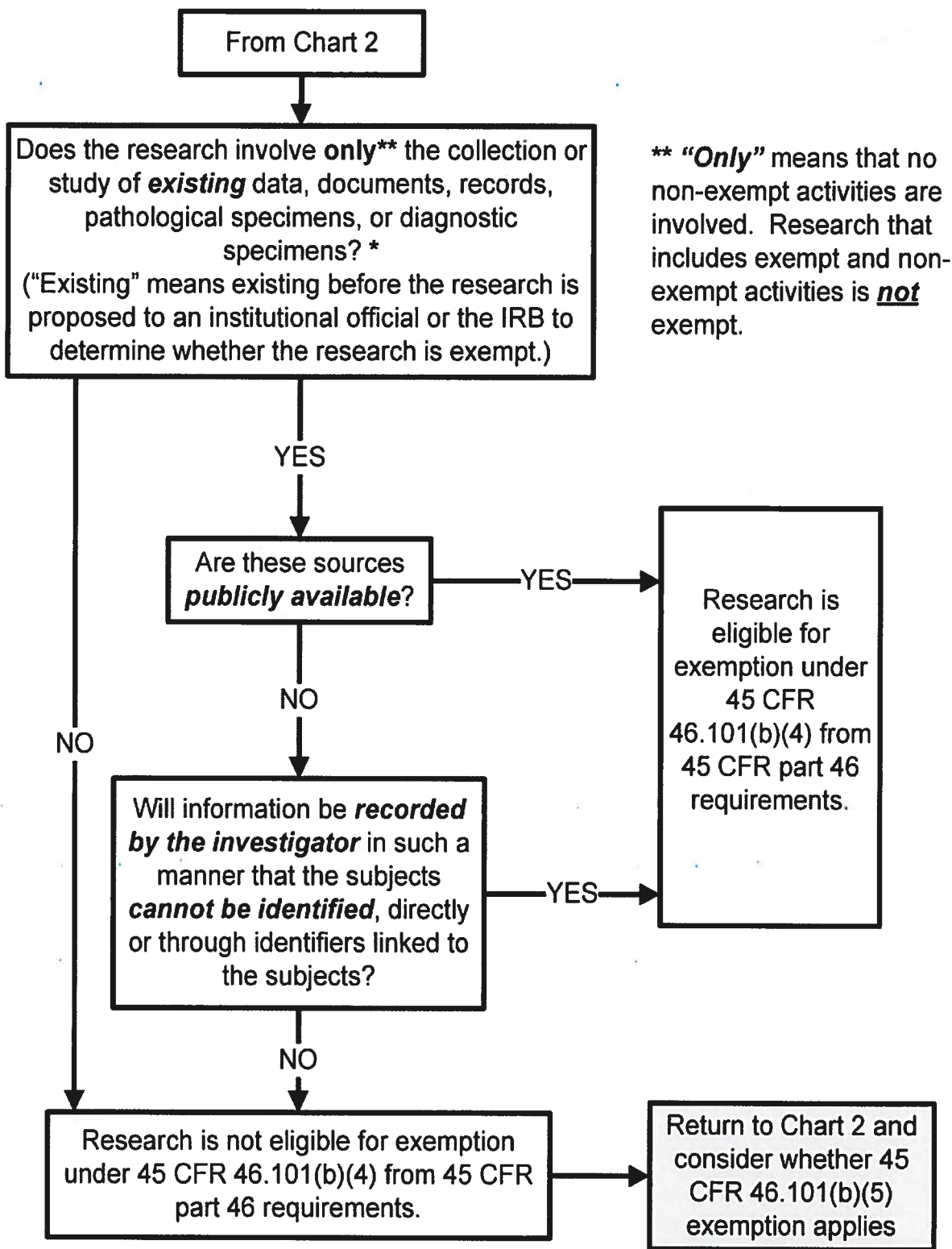
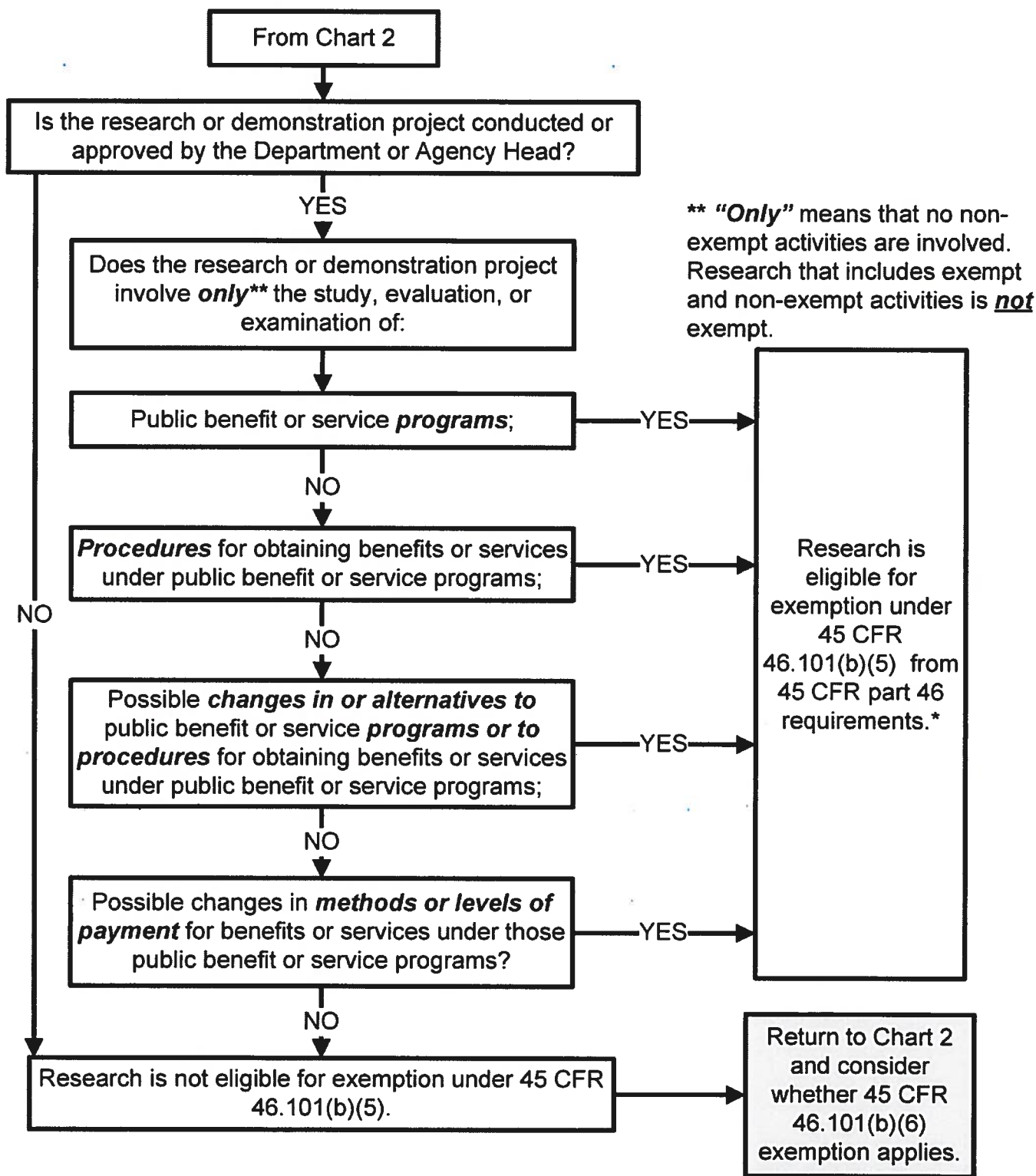


Chart 5: Does Exemption 45 CFR 46.101(b)(4) (for Existing Data, Documents, Records and Specimens) Apply? [View text version of Chart 5](#)



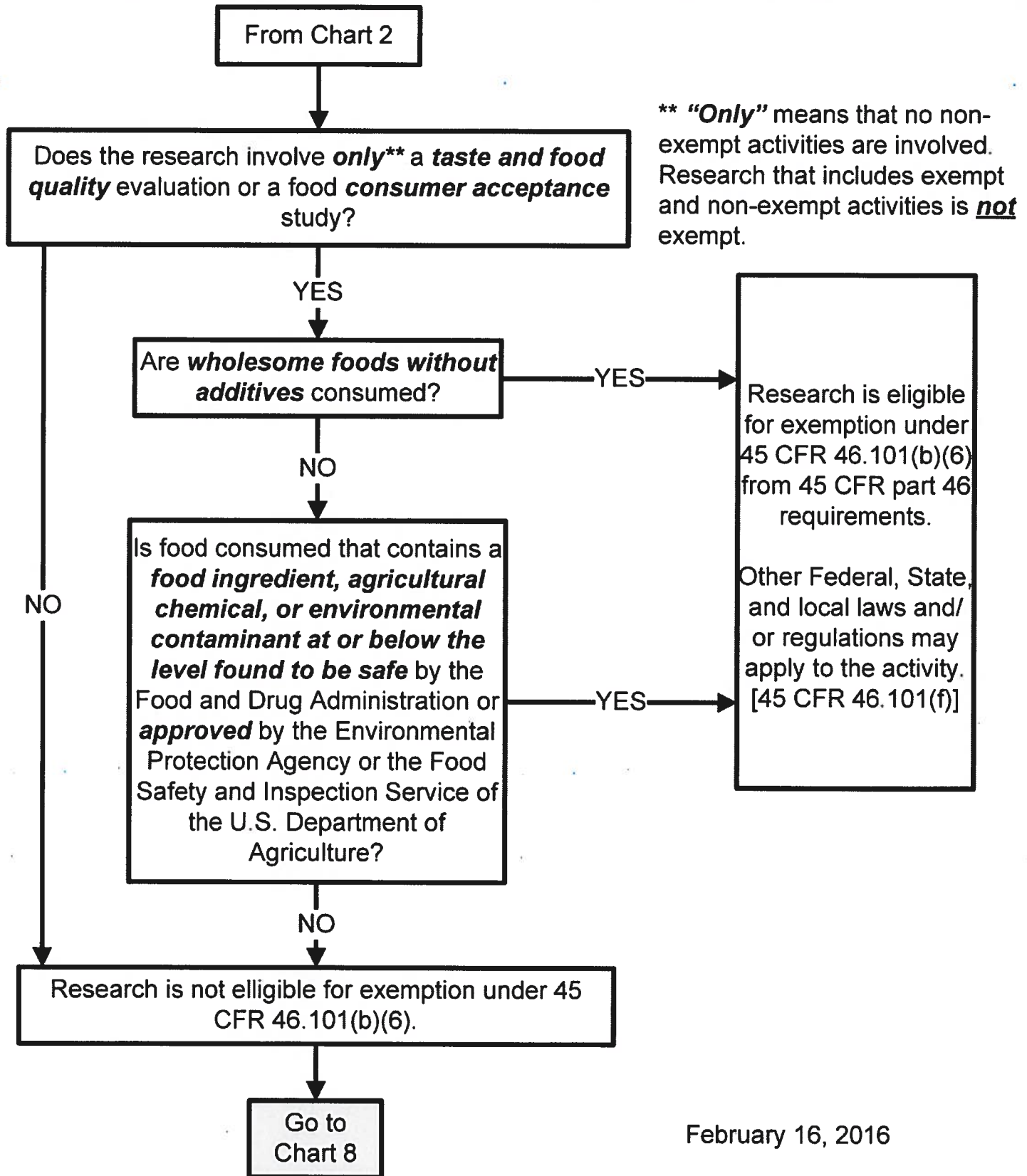
* Note: See OHRP guidance on research use of stored data or tissues and on stem cells at <http://www.hhs.gov/ohrp/regulations-and-policy/guidance/guidance-on-research-involving-stem-cells/index.html>, and on coded data or specimens at <http://www.hhs.gov/ohrp/regulations-and-policy/guidance/research-involving-coded-private-information/index.html> for further information on those topics.

Chart 6: Does Exemption 45 CFR 46.101(b)(5) (for Public Benefit or Service Programs) Apply? [View text version of Chart 6](#)



* Note: See OHRP guidance on exemptions at <http://www.hhs.gov/ohrp/regulations-and-policy/guidance/exemptions-for-public-benefit-and-service-programs/index.html> for further description of requirements for this exemption.

Chart 7: Does Exemption 45 CFR 46.101(b)(6) (for Food Taste and Acceptance Studies) Apply? [View text version of Chart 7](#)



February 16, 2016